



Influenza & COVID-19 Ag Combo Rapid Test

Product Information

The Influenza & COVID-19 Ag Combo Rapid Test Cassette (Swab) is an in vitro immunochromatographic assay for the qualitative and differential detection of nucleocapsid protein antigen from influenza A (including the subtype H1N1), influenza B and/or SARS-CoV-2 in nasopharyngeal (NP) swab specimens. It is intended to aid in the rapid diagnosis of influenza A, influenza B and/or SARS-CoV-2 infections. This test provides only a preliminary test result. Therefore, any reactive specimen with the Influenza & COVID-19 Ag Combo Rapid Test Cassette (Swab) must be confirmed with alternative testing method(s) and clinical findings.

Benefits

- Rapid testing for Influenza A&B and SARS-CoV-2 antigen within 15 minutes
- Facilitates patient treatment decisions quickly
- Simple, time-saving procedure
- All necessary reagents provided & no equipment needed
- High sensitivity and specificity

Specification

Information	Detail
Time to result	15 minutes
Storage	2-30°C
Shelf life	24 months
Specimen type	Nasopharyngeal swab

Contents

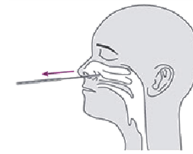
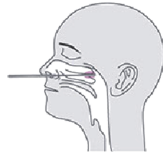
- 20 Test cassettes
- 20 Sterile swabs
- 20 Extraction tubes and dropper tips
- 1 Workstation
- 2 Buffers
- 1 Package insert

Healgen Scientific LLC
001-713-733-8088
www.healgen.com

Test Procedure & Interpretation

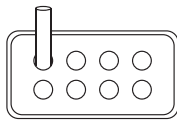
Specimen collection

- 1 Use the nasopharyngeal swab provided in the kit, carefully insert the swab in the patient's nostril.
- 2 Swab over the surface of the posterior nasopharynx and rotate the swab several times.
- 3 Withdraw the swab from the nasal cavity.

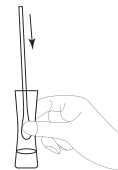


Sample preparation

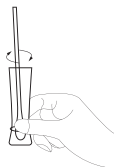
- 4 Insert the test extraction tube into the provided workstation.
- 5 Add 13-17 drops (about 0.5mL) of the extraction buffer into the extraction tube.
- 6 Insert the swab into the extraction tube.
- 7 Roll the swab at least 6 times while pressing the head of the swab against the bottom and sides of the extraction tube.
- 8 Leave the swab in the extraction tube for 1 minute.
- 9 Squeeze the tube several times from the outside of the tube to immerse the swab. Remove the swab.



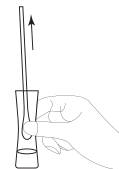
13-17 Drops



6 Times

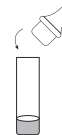
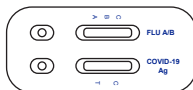


1 minute

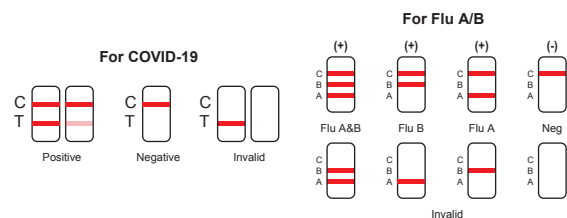
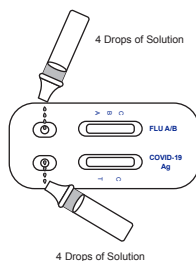


Test procedure & interpretation of results

- 10 Remove test cassette from the sealed pouch just prior to testing and lay flat on a clean, level surface.
- 11 Fit the dropper tip with filter on top of the extraction tube tightly.



- 12 Hold the extraction tube vertically and add 4 drops (about 100 µL) of the test sample by squeezing the extracted solution tube into each sample well (S). Start the timer.
- 13 Read the results at 15 minutes. Do not interpret the result after 20 minutes.



Ordering Information

Product Description	Specimen	Catalog No.	Format	Cut-off Value	Kit Size
Influenza & COVID-19 Ag Combo Rapid Test Cassette	Nasopharyngeal Swab	GCFC-525a √	Cassette	Influenza A: 1.5×10^4 TCID ₅₀ /Test; Influenza B: 1.5×10^5 TCID ₅₀ /Test	20 Tests/Kit